

SPE Mid-Continent Section Newsletter

February 2024 | Issue No. 490



Mid-Continent Section



www.spemc.org

SPE Mid-Continent Section

Executive Committee Voting Members

Chairman:	Phone	E-mail
Brian Flake, Calyx Energy		bflake@calyxenergy.com
Vice Chairman (Programs):		
Bryn Lewis, Magellan		bryn.lewis@magellanlp.com
Secretary:		
McKenzie Bender, Williams		
Treasurer:		
Ryan Owens, Bank of Oklahoma Energy Group		ROwens@bokf.com
Directors:		
Nathan Buchanan, Parsage Oil Company	918-857-0434	nsbuchanan@gmail.com
Kyle Drew, Calyx Energy	214-673-2011	kylesdrew@gmail.com
Charley Mathis, Thru Tubing Solutions	918-629-5853	cmathis@thrutubing.com
Hap Pinkerton, Halliburton	918-645-1715	hap.pinkerton@halliburton.com
Joseph Tyree, Consultant	918-504-7171	joseph-tyree@outlook.com
Past Chairman:		
Miranda Dunham, Exponent Energy		mirandabdunham@gmail.com
Regional Director:		
Robert Martinez		

Committee Chairmen Non-Voting Members

Newsletter Editor:		
Betty Felber, Consultant	918-403-9199	IORImplement@outlook.com
Assistant Newsletter Editor,		
Webmaster, Communications:		
Kristi Davies, Consultant		sixgun@olp.net
Newsletter Advertising:		
<i>Open</i>		
Social Media:		
Joseph Tyree, Consultant	918-504-7171	joseph-tyree@outlook.com
Continuing Education:		
<i>Open</i>		
Awards:		
<i>Open</i>		
Scholarships:		
Bryn Lewis, Magellan		bryn.lewis@magellanlp.com
Memberships:		
Mike Stafford, The University of Tulsa	918-631-2604	mike-stafford@tulsa.edu
Nominations:		
Miranda Dunham, Exponent Energy		mirandabdunham@gmail.com
IOR Conference 2024:		
Tom McCoy		tfrmccoy@gmail.com
Young Professionals:		
<i>Open</i>		
Golf Tournament:		
Michael Owens, Extract Production Services		michaelsowen1989@gmail.com
Sporting Clays Tournament:		
Charley Mathis, Thru Tubing Solutions	918-629-5853	cmathis@thrutubing.com

SPE Mid-Continent Section | P.O. Box 575, Tulsa, OK 74101-0575 | www.spemc.org

Voting members consist of the Executive Committee. The Chairman only votes in the event of a tie. A Motion can be voted upon with a Quorum of the Voting Members present. A Quorum consists of five Voting Members present. An affirmative vote will consist of 50% of the Quorum present. Committee Chairmen and in their absence, the Committee Vice Chairmen are encouraged to attend board meetings and provide representation and committee reports. The editor welcomes newsworthy items about SPE members or events. Please provide a **draft to the newsletter editor by the 25th of the month**. Change of contact information requests should be made to SPE in Richardson, TX, 1-800-456-6863, or service@spe.org.

Chairman's Gavel

Brian Flake, 2023-2024 Chairman

Our February meeting speaker will be Janelle Lawer, who is a touring Distinguished Lecturer from SPEI. Her talk is titled, "Is Mercury Contaminating your Natural Gas? Improved Accuracy in Downhole Analysis; A Case Study from Sand Face to Production Stream."

IOR 2024 registration is live. Information on the event and links to the registration page can be found at www.speior.org. We look forward to seeing you in attendance. You may also find a link to the program of events at the website as the schedule continues to be fleshed out. If you would like to become a sponsor or host an exhibit, those options are available as well.

Thanks,

Brian Flake
2023-2024 Chairman
bflake@calyxenergy.com



**Now Available:
The SPE
International App**

Download the new app and access
SPE anytime, anywhere.

Download on the
App Store

GET IT ON
Google Play

SPE International
Society of Petroleum Engineers

Now Available: The SPE International App

The New SPE International App allows you access to SPE anytime, anywhere. It has many great benefits: access to our widely used OnePetro® and PetroWiki® platforms, the latest content from SPE magazines and publications which you can tailor to your preferences, and global networking opportunities through SPE Connect.

SPE Mid-Continent Newsletter Sponsors

Calendar	3
Chairman's Gavel	1
Editor's Column	3
Presentations / Meetings	6-7
SPE App	1
SPE Bookstore	7
SPE Energy Stream	2
SPE Membership	8
SPE PetroWiki	7
SPEMC Social Media	4
TU Spring 2024 Graduate Seminar Series Schedule	5

SPE EnergyStream

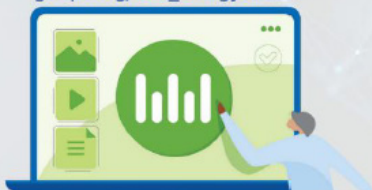
The Industry's Digital Pulse

Live
SPE Live
SPE Event Presentations

On-Demand
Webinars
Tech Talks

WATCH NOW

go.spe.org/SPE_EnergyStream



From Your Editor

Betty Felber, 2023-2024 Editor

Presidents' Day and Valentine's Day—two days of note in our shortest month February. Be sure to add another day for your activities—our Mid-Continent Luncheon. We are have a visit from an SPE Distinguished Lecturer—Janelle Lawer. The topic is based on case studies of Hg contamination.

One other item to remember is to review the ads in our newsletter. There are some interesting technologies that can help solve some of your scientific challenges. Look for technologies that can help you do your job faster, economically and accurately. When you find these outstanding technologies, share them with your fellow professionals by talking about the successes or failures you have had.

Betty Felber
Editor

Calendar of Events

Wednesday, February 21, 2024 - SPE Distinguished Lecturer - Luncheon Meeting - **Tulsa Country Club**

- Janelle Lawer, "Is Mercury Contaminating your Natural Gas? Improved Accuracy in Downhole Analysis: A Case Study from Sand Face to Production Stream"

April 23-25, 2024 - SPE Improved Oil Recovery Conference - Tulsa

Short Courses: Monday, April 22nd , Technical Program Sessions: Tuesday, April 23rd - Thursday, April 25th - www.speior.org. **REGISTRATION IS NOW OPEN**

All SPEMC luncheons are held at the OSU Tulsa Conference Center unless otherwise noted - See pp 6-7 for more details.

FIND US ON OUR SOCIAL MEDIA PAGES!

Stay up to date on all future events, news, and announcements!
(Scan QR Codes with Phone Camera)

FACEBOOK

www.facebook.com/SPEMidCon



TWITTER

[@SPEMidCon](https://twitter.com/SPEMidCon)



LINKEDIN

www.linkedin.com/company/spemidcon



Continuing Education

TU Spring 2024 Graduate Seminar Series Schedule

Spring 2024

TU Friday Afternoon Graduate Seminar Schedule
McDougall School of Petroleum Engineering
430 S. Gary Place 74104

All Seminars are at 3:30 in Keplinger Hall, Room 2040 (Main floor, big auditorium room in the middle). Keplinger Hall is located on the southwest corner of 4th Place and Gary Place. Enter in the middle doors. Room 2040 is in the middle of the foyer, behind the Geology Dept rock display case.

Use the Keplinger Parking Lot on 4th Place west of Harvard. Ignore the Permit Required signs – Security does not issue tickets after 3'ish. If you do get ticketed anyway, we will take care of it.

- | | |
|------------|----------------------------------------------------------------------------------------------------------------------------------------------------|
| Feb 2nd | Shale Nanopores and Their Impact on Phase Behavior and EOR
Dr. Hadi Nasrabadi / Dept of PE, Texas A&M University |
| Feb 16th | A Merging Strategy for Soft Materials Engineering From Multiscale Approach to Chemical Informatics. Dr. Weizhong Zou / University of South Florida |
| Feb 23rd | A Way Forward in Modeling Relative Permeability.
Dr. Russ Johns / Chair of Earth & Mineral Sciences, Pennsylvania State University |
| March 15th | Integrated Production Modeling for Permian Basin Unconventional Wells.
Dr. Yula Tang / Chevron |
| March 29th | Managing Enterprise Risk Associated with Energy Supply Operations.
Herman Acuna / President, Ryder Scott Company |
| April 12th | Manipulating the Surface Chemistry of Nanomaterials for Improved Functionality.
Dr. Hugh Daigle / Dept of PE, University of Texas |
| April 26th | Rapid Subsurface CO2 Storage Modeling with Fourier Neural Operator Based Surrogates.
Omer Alpek / Shell |

No Cost to Attend, Attendance earns one (1) pdh. Forward any questions to mike-stafford@utulsa.edu.

FEBRUARY 2024

WEDNESDAY, February 21, 2024 | Luncheon Meeting | 11:20 am -1:00 pm.

Location: Tulsa Country Club, 701 North Union Avenue, Tulsa, OK 74127

Speaker: Janelle Lawer, Woodside Energy | SPE Distinguished Lecturer

Topic: “Is Mercury Contaminating your Natural Gas? Improved Accuracy in Downhole Analysis; A Case Study from SandFace to Production Stream”

Register: To register and pay by credit card, or to make reservations to pay with cash or check at the door,* go to <https://spemc022124.eventbrite.com>. Registration ends Tuesday, February 20th at 10:00 a.m.

Description: Natural gas is a critical part of the world’s energy supply and plays an important role in the transition to lower carbon energy sources. Industry’s ability to process natural gas safely and efficiently will continue to rely on an accurate understanding of feed gas composition and contaminants, particularly in enabling future developments via existing infrastructure.

Mercury is toxic to organisms and highly volatile. Produced from hydrocarbon basins globally, the inaccurate measurement of mercury concentrations can potentially impact aspects of health, process safety, environment, operations, waste disposal, and project decommissioning. Trace mercury concentrations in the hydrocarbon stream can potentially introduce liquid metal embrittlement hazards to industrial equipment, including cryogenic heat exchangers used to refrigerate gas into LNG. Worldwide, significant project cost overruns and processing incidents have resulted from uncertainty around mercury concentrations in hydrocarbon streams.

Successful mercury management ideally begins early in a project’s lifecycle with development decisions informed by accurate measurement of mercury concentrations from reservoirs. Historically, this has been problematic as mercury contamination and scavenging often results in large range of uncertainty in sampled gas.

Watch for announcements about future meetings and events in this newsletter or by email. To register and pay by credit card, or make a reservation to pay by check or cash at the door, go to the corresponding link for a luncheon. In-person luncheon cost is \$20.00 for Professionals, Retired, Unemployed, Graduate Students, and free for Undergraduate Students. Payment by credit card is for advanced registrations ONLY, no credit cards will be accepted at the meeting, only check or cash accepted at the door with a reservation.

The results and recommendations from a multi-company collaborative study to reduce mercury uncertainty in gas will be shared with industry. New downhole sampling and analysis techniques will be highlighted, along with insights from a case study of the Julimar Field in Western Australia. The recommendations, procedures and operational best practices discussed will be applicable across the industry, and beneficial to any party considering the impact of mercury in the development and processing of natural gas resources.

Speaker Bio: Janelle Lawer is an energy industry professional with 20 years working with supermajor and mid- size exploration and production companies in Australia and the USA. She has held roles across the spectrum of geoscience, petrophysics, reservoir engineering and technical asset management, with a focus on delivering integrated technical solutions.


Janelle holds a Bachelor of Science (Hons I) from the University of Queensland, Australia. She is an active member of the Society of Petroleum Engineers (SPE) and will serve as a SPE Distinguished Lecturer in 2023-2024.



PetroWiki

PetroWiki is a free resource from SPE to answer many basic petroleum engineering and operational questions. SPE professional members can contribute their expertise through updating or adding to PetroWiki content.

<http://petrowiki.org/PetroWiki>



Keep your SPE membership producing for you.

Renew Now »

A green rectangular banner with a white SPE logo in the top right corner. The logo consists of two stylized globes with the letters "SPE" in the center. Below the banner is a dark grey bar with the text "Renew Now »" in white.

SPE Monthly Bulletin No. 490

Issue Date: February 13, 2024

SPE Mid-Continent Section

P.O. Box 575

Tulsa, OK 74101-0575