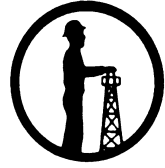


SPE Mid-Continent Section Newsletter

March 2025 | Issue No. 499



Mid-Continent Section



www.spemc.org

SPE Mid-Continent Section

Executive Committee Voting Members

Chairman: Bryn Lewis, ONEOK	Phone	E-mail Bryn.Lewis@oneok.com
Vice Chairman (Programs): McKenzie Bender, Williams		
Secretary: Laura Camila Osorio Ojeda		
Treasurer: Ryan Owens, BOK Energy Group		ryan.matthew.owens@gmail.com
Directors: Miranda Dunham, Exponent Energy		mirandabdunham@gmail.com
Charley Mathis, Thru Tubing Solutions	918-629-5853	cmathis@thrutubing.com
Hap Pinkerton, Halliburton	918-645-1715	hap.pinkerton@halliburton.com
Mike Stafford, The University of Tulsa	918-631-2604	mike-stafford@utulsa.edu
Tyree, Consultant	918-504-7171	joseph-tyree@outlook.com
Past Chairman: Brian Flake, Calyx Energy		bflake@calyxenergy.com
Regional Director: Robert Martinez		

Committee Chairmen Non-Voting Members

Newsletter Editor: Betty Felber, Consultant	918-403-9199	IORImplement@outlook.com
Assistant Newsletter Editor, Webmaster, Communications:		
Kristi Davies, Consultant		sixgun@olp.net
Newsletter Advertising: Open		
Social Media: Joseph Tyree, Consultant	918-504-7171	joseph-tyree@outlook.com
Continuing Education: Open		
Awards: Open		
Scholarships: Bryn Lewis, ONEOK		Bryn.Lewis@oneok.com
Memberships: Mike Stafford, The University of Tulsa	918-631-2604	mike-stafford@utulsa.edu
Nominations: Brian Flake, Calyx Energy		bflake@calyxenergy.com
IOR Conference 2026: Tom McCoy		tfrmccoy@gmail.com
Young Professionals: Open		
Golf Tournament: Michael Owens, Extract Production Services		michaelsowen1989@gmail.com
Sporting Clays Tournament: Charley Mathis, Thru Tubing Solutions	918-629-5853	cmathis@thrutubing.com

SPE Mid-Continent Section | P.O. Box 575, Tulsa, OK 74101-0575 | www.spemc.org

Voting members consist of the Executive Committee. The Chairman only votes in the event of a tie. A Motion can be voted upon with a Quorum of the Voting Members present. A Quorum consists of five Voting Members present. An affirmative vote will consist of 50% of the Quorum present. Committee Chairmen and in their absence, the Committee Vice Chairmen are encouraged to attend board meetings and provide representation and committee reports. The editor welcomes newsworthy items about SPE members or events. Please provide a draft to the newsletter editor by the 25th of the month. Change of contact information requests should be made to SPE in Richardson, TX, 1-800-456-6863, or service@spe.org.

Chairman's Gavel

Bryn Lewis, 2024-2025 Chairman

The pace of the year is picking up and there's a lot to look forward to this spring. Our annual SPE Mid-Continent Section Golf Tournament will be on Monday, April 29th at Meadowbrook Country Club. There are sponsorship opportunities available. Reach out to michaelsowen1989@gmail.com if you are interested in learning more.

Scholarships!!! The specific goal of all our fundraisers is to raise money for scholarships. If you know of an upcoming college freshman or current college student that is pursuing an undergraduate degree in a petroleum-related field (petroleum engineering, energy management, chemical engineering, mechanical engineering, etc.), please encourage them to apply for our scholarship! Scholarship applications can be found on our website (www.spemc.org) under the "scholarships" tab. **Applications are due April 30th.** If you, or a student you know, have any questions regarding the application, please feel free to reach out to me at midconspe scholarship@gmail.com.

The Section Officers and Directors Election is coming up in May. There are a total of nine (9) positions open for board member positions. The Officer positions that are open for election are Chairman, Vice Chairman, Treasurer and Secretary. Additionally, there are 5 Director positions open. The Election Committee is headed by the Past Chairman, who this term is Brian Flake. If you are interested in serving in one of these positions, or if you know of a worthy person you would like to nominate, please submit that information to Brian.

Bryn Lewis
2024-2025 Chairman
Bryn.Lewis@oneok.com

SPE Mid-Continent Newsletter Sponsors

Calendar	3
Chairman's Gavel	1
Editor's Column	3
Presentations / Meetings	6-7
SPEMC Social Media	9
Scholarship Forms 2025 - 2026	2

SPE Mid-Continent Scholarship Applications

Scholarship applications for incoming college freshmen and current undergrad students are available on the SPE Mid-Continent Section website. Please visit www.spemc.org/spemc-scholarships to download the required documents and to review scholarship requirements. Applications are due April 30th.

Take time to check out this important topic on the SPE Energy Stream.

IMPORTANCE OF THE SPE PETROLEUM ENGINEERING CERTIFICATION

<https://streaming.spe.org/importance-of-the-spe-petroleum-engineering-certification>

March is here already. We have only two more months remaining for this group of officers as our leaders. Come support them and our Section at the March 26th luncheon. It should be very informative on fracturing. After all, former members of our Section were the first to actually perform field fracture treatments.

Another topic, your Section is conducting the behind the scenes work for our next IOR Conference. If you would like to be part of the IOR planning, contact Tom McCoy. He is the General Chair for the April 2026 IOR Conference.

Betty Felber
Editor

Calendar of Events

Wednesday, March 26, 2025 - Luncheon Meeting - Tulsa Country Club

- Kevin Wutherich, Chief Technology Officer at Drill2Frac, “Enhancing Predictive Understanding of Parent-Child Fracture Dynamics: A Holistic Approach”

SPE OKC Oil and Gas Symposium - Sunday, April 13 - Friday, April 18, 2025 - OKC

Wednesday, April 16, 2025 - Luncheon Meeting - Tulsa Country Club - **SAVE THE DATE**

- Don Aldridge, “Improving Marginal Well Economics While Eliminating Well-head Emissions - A Case Study”

Monday, April 29, 2025 - **SAVE THE DATE**

- SPE Mid-Continent Section Golf Tournament, Meadowbrook - Watch for details as they develop via email and in future newsletters.

Wednesday, May 21, 2025 - Luncheon Meeting - Tulsa Country Club - **SAVE THE DATE**

- JP Dick, Pinnacle Energy Services, “Topic TBA”

All SPEMC luncheons are held at the OSU Tulsa Conference Center unless otherwise noted - See pp 6-7 for more details.

ATCE 2025 Location Update

We've got big news for the 2025 SPE Annual Technical Conference and Exhibition (ATCE). Due to ongoing construction at the Kay Bailey Hutchison Convention Center in Dallas, Texas, the original venue will not be ready in time for the 2025 event. But don't worry—we've secured an exciting new location!

ATCE 2025 will now be held from 20-22 October in Houston, Texas at the George R. Brown Convention Center.



PetroWiki is a free resource from SPE to answer many basic petroleum engineering and operational questions. SPE professional members can contribute their expertise through updating or adding to PetroWiki content.

Petrowiki is moving to onepetro

PetroWiki is transitioning to OnePetro, which will bring all SPE resources together in one trusted and easily navigable location. This move enhances functionality with cross-search capabilities, allowing seamless access to both PetroWiki's archived content and broader SPE research.



Keep your SPE membership
producing for you.

Renew Now »



Now Available: The SPE International App

Download the new app and access
SPE anytime, anywhere.



Society of Petroleum Engineers

Now Available: The SPE International App

The New SPE International App allows you access to SPE anytime, anywhere. It has many great benefits: access to our widely used OnePetro® and PetroWiki® platforms, the latest content from SPE magazines and publications which you can tailor to your preferences, and global networking opportunities through SPE Connect.

SPE EnergyStream

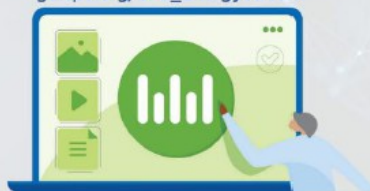
The Industry's Digital Pulse

Live
SPE Live
SPE Event Presentations

On-Demand
Webinars
Tech Talks

WATCH NOW

go.spe.org/SPE_EnergyStream



MARCH 2025

WEDNESDAY, March 26, 2025 | Luncheon Meeting | 11:20 am -1:00 pm.

Location: Tulsa Country Club, 701 North Union Avenue, Tulsa, OK 74127

Register: To register and pay by credit card, or to make reservations to pay with cash or check at the door,* go to <https://spemc032625.eventbrite.com>. Registration ends Tuesday, March 25th at 10:00 a.m.

Speaker: Kevin Wutherich, Chief Technology Officer at Drill2Frac

Topic: “Enhancing Predictive Understanding of Parent-Child Fracture Dynamics: A Holistic Approach”

Description: This talk presents a novel approach to understanding fracture interactions between infill wells and producing offsets during hydraulic fracturing, integrating wellbore pressure responses with geospatial data and completion results in a four-dimensional environment. Unlike traditional methods that focus narrowly on pressure changes, this approach incorporates crucial factors such as well locations, existing fractures, geological properties, and fracture sequencing. Through real-world case studies, advanced tools were used to analyze offset well pressure responses alongside data on rock strength, depletion, and wellbore heterogeneity. By combining these data, the method accurately identifies fracture interaction locations and mechanisms, enabling predictive modeling of fluid pathways. In the study of 100 stages, depleted fractures were found to strongly correlate with significant pressure increases in parent wells and direct fracture hits, with the method successfully predicting 90% of these interactions. This proactive, real-time integration of geological, geospatial, and completion data offers a groundbreaking framework for predicting and mitigating fracture interactions in a dynamic, four-dimensional context.

Watch for announcements about future meetings and events in this newsletter or by email. To register and pay by credit card, or make a reservation to pay by check or cash at the door, go to the corresponding link for a luncheon. In-person luncheon cost is \$20.00 for Professionals, Retired, Unemployed, Graduate Students, and free for Undergraduate Students. Payment by credit card is for advanced registrations ONLY, no credit cards will be accepted at the meeting, only check or cash accepted at the door with a reservation.

APRIL 2025 - SAVE THE DATE

WEDNESDAY, April 16, 2025 | Luncheon Meeting | 11:20 am -1:00 pm.

Location: Tulsa Country Club

Speaker: Don Aldridge

Topic: “Improving Marginal Well Economics While Eliminating Wellhead Emissions - A Case Study”

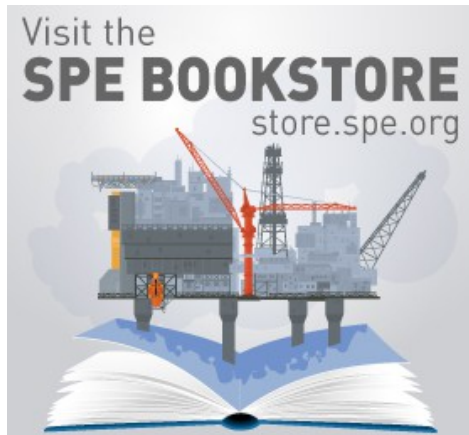
MAY 2025 - SAVE THE DATE

WEDNESDAY, May 21, 2025 | Luncheon Meeting | 11:20 am -1:00 pm.

Location: Tulsa Country Club

Speaker: JP Dick, Pinnacle Energy Services

Topic: “TBA”



FIND US ON OUR SOCIAL MEDIA PAGES!

Stay up to date on all future events, news, and announcements!
(Scan QR Codes with Phone Camera)

FACEBOOK

www.facebook.com/SPEMidCon



TWITTER

[@SPEMidCon](https://twitter.com/SPEMidCon)



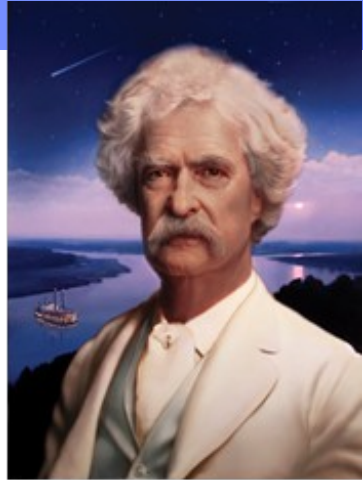
LINKEDIN

www.linkedin.com/company/spemidcon



“Good decisions come from experience. Experience comes from making bad decisions.”

— *Samuel Clements aka Mark Twain, Author*



SPE Monthly Bulletin No. 499

Issue Date: March 11, 2025

SPE Mid-Continent Section

P.O. Box 575

Tulsa, OK 74101-0575